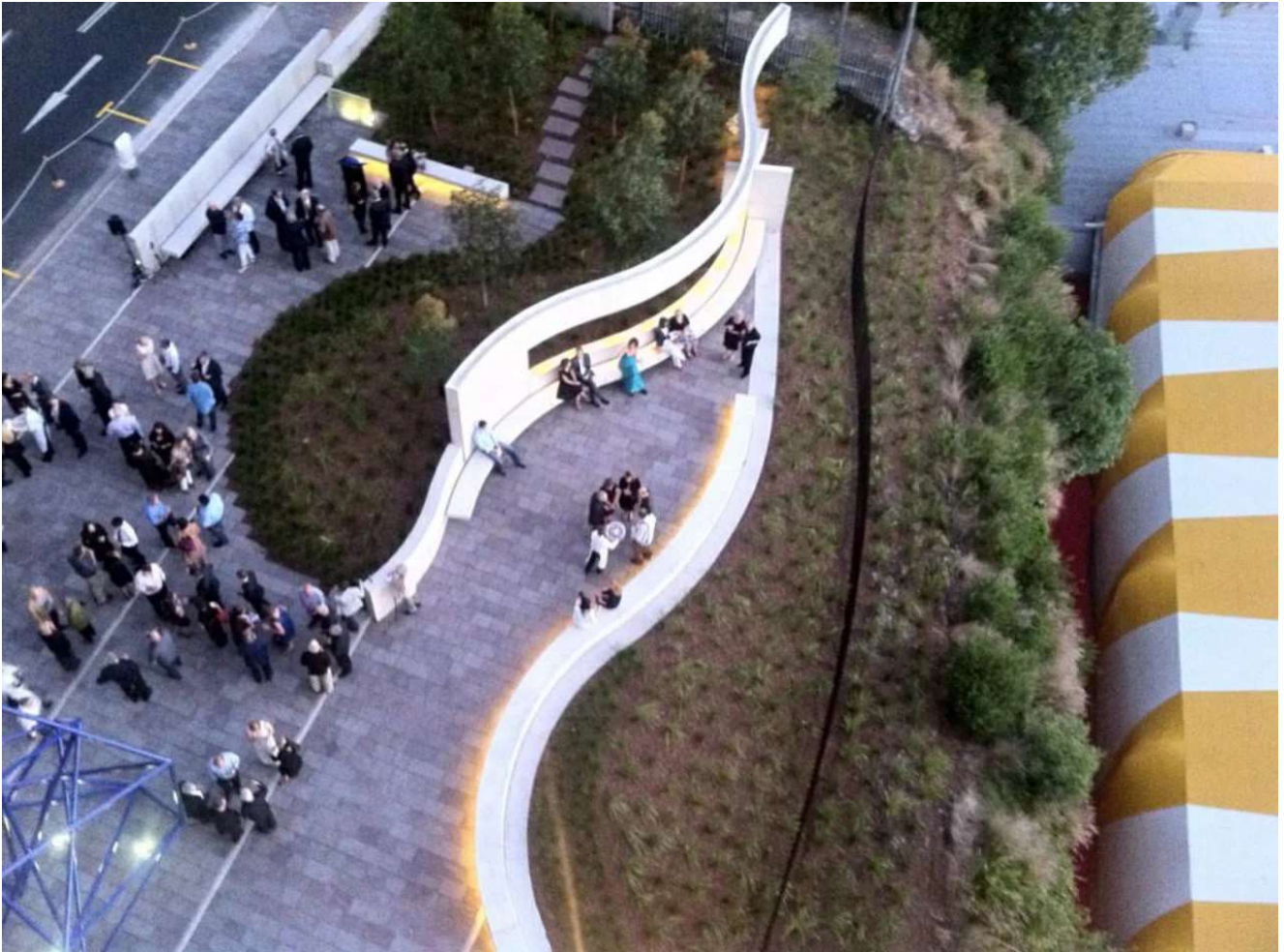


Stories /Civic & Institutional

# Tribute to Harry

SAVE | 0 SHARE TWEET HELP

A new park pays homage to architect Harry Seidler



Mardini Constructions works on both residential and commercial projects, they built this park as a homage to the late designer; Harry Seidler.





The work of great architects lives on and is an inspiration for those who follow. To pay a tribute to one of Sydney's great architects, the late Harry Seidler, his wife Penelope Seidler commissioned a new park. This was designed by Harry Seidler & Associates and built by Mardini Constructions and Gil Williams, a close friend of Harry's.

The site, at Milson's Point, Sydney, is adjacent to the six-storey Harry Seidler office building, and has panoramic views to the Sydney Harbour Bridge.



Mardini Constructions works on both residential and commercial projects, they built this park as a homage to the late designer; Harry Seidler.

Elvis Mardini, managing director of Mardini Constructions, says the firm was honoured to have been chosen to build Harry's Park.

"We worked very closely with the dedicated staff at Harry Seidler & Associates to realise the architects' vision," he says. "Key features include a 4.5m-long cantilevered ribbon beam wall and seats, in white concrete formed on site, and extensive tiling a reference to Seidler's own projects."





Mardini Constructions works on both residential and commercial projects, they built this park as a homage to the late designer; Harry Seidler.

"Mardini Constructions works on commercial and residential projects. We enjoy the challenge of taking on very intricate and complex work, including new homes, remedial structural repairs and restorations on heritage-listed homes."

Story by: [Trendsideas](#)

20 Dec, 2011

[Civic and Institutional Design](#)



Home kitchen bathroom commercial design

### Latest Post

[Regal department](#)

01 Aug, 2023

[Honouring the A-frame](#)

30 Jul, 2023

[Double delight](#)

30 Jul, 2023

### We know the Specialists



[Watts & Hughes](#)

[From Design to Construction](#)





[Drinking Water Systems](#)  
[Merquip](#)

Related Book

[MORE BOOKS >](#)



**AU2715**

AU2715

[READ MORE](#)

**Similar Stories**

[What's in a face](#)

28 Jun, 2023

[For a fossil-fuel-free future](#)

08 Jun, 2023

[Urban canyon](#)

07 Jun, 2023

[Unwrapping the charms of Egypt](#)

13 Mar, 2023

[Scaling up wellness](#)

09 Mar, 2023

[Place to connect with nature, people and play](#)

09 Feb, 2023

advertisement

advertisement

📞 021 886 622 | ✉ [info@trendsideas.com](mailto:info@trendsideas.com) | 🌐 [trendsideas.com](https://trendsideas.com) | 📍 Level 2, 49A Main Highway Ellerslie, Auckland 1051 New Zealand

[New Home](#) [Kitchen](#) [Bathroom](#) [Interiors](#) [Outdoor Living](#) [Renovation](#) [Top Tips](#) [TIDA](#) [Commercial Design](#) [设计·精选](#)

© 2023 Trendsideas.com